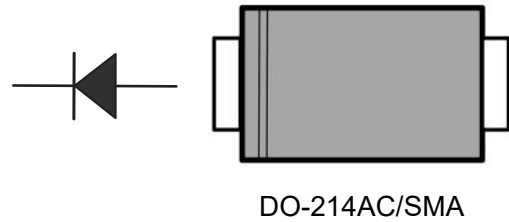


Surface Mount Superfast Recovery Rectifiers

Parameter	Value	Unit
V_{RRM}	50~600	V
$I_{F(AV)}$	1.0	A
T_{RR}	35	ns



DO-214AC/SMA

Features

- For surface mounted applications
- Low profile package
- Glass Passivated Chip Junction
- Easy to pick and place
- Super fast reverse recovery time

Applications

- For use in high-frequency rectification and free-wheeling applications in switching-mode converters and inverters for consumer electronics, computer systems, and telecommunications.

Absolute Maximum Ratings and Characteristics (at $T_J = 25^\circ\text{C}$ unless otherwise specified)

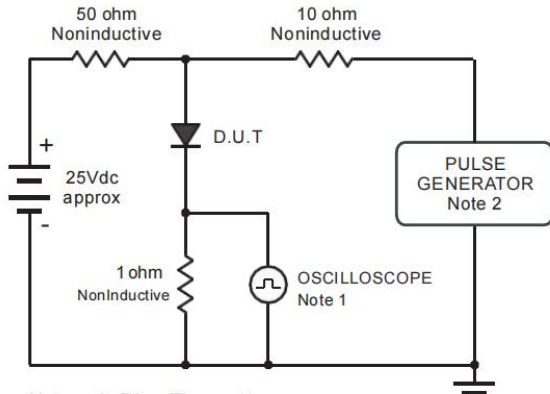
Parameter	Symbol	ES1A	ES1B	ES1C	ES1D	ES1E	ES1G	ES1J	Units
Maximum Repetitive Peak Reverse Voltage	V_{RRM}	50	100	150	200	300	400	600	V
Maximum RMS voltage	V_{RMS}	35	70	105	140	210	280	420	V
Maximum DC Blocking Voltage	V_{DC}	50	100	150	200	300	400	600	V
Maximum Average Forward Rectified Current	$I_{F(AV)}$	1.0							A
Peak Forward Surge Current 8.3 ms Single Half Sine Wave Superimposed on Rated Load(JEDEC Method)	I_{FSM}	30							A
Maximum Forward Voltage at 1A	V_F	1				1.25		1.70	V
Maximum DC Reverse Current at Rated DC Blocking Voltage	I_R					5 100			μA
Typical Junction Capacitance at $V_R=4\text{V}$, $f=1\text{MHz}$	C_j	15							pF
Maximum Reverse Recovery Time (1)	t_{rr}	35							ns
Typical Thermal Resistance (2)	$R_{\theta JA}$	75							$^\circ\text{C/W}$
Operating and Storage Temperature Range	T_J, T_{stg}	-55 ~ +150							$^\circ\text{C}$

Notes:

- (1) Measured with $I_F = 0.5\text{A}$, $I_R = 1\text{A}$, $I_{rr} = 0.25\text{A}$.
 (2) P.C.B. mounted with 2.0" X 2.0" (5 X 5cm) copper pad areas.

Typical characteristics

Fig.1 Reverse Recovery Time Characteristic And Test Circuit Diagram



Note: 1. Rise Time = 7ns, max.
Input Impedance = 1megohm, 22pF.
2. Rise Time = 10ns, max. Source Impedance = 50 ohms.

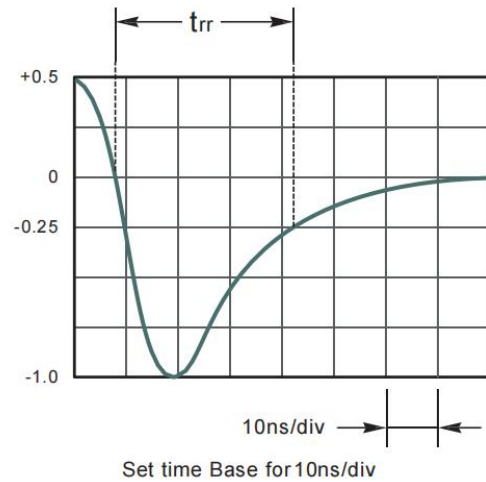


Fig.2 Maximum Average Forward Current Rating

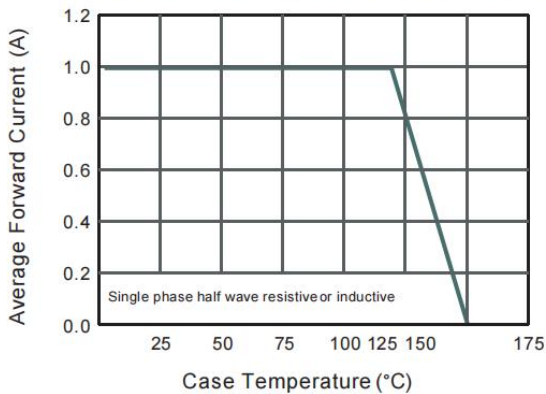


Fig.3 Typical Reverse Characteristics

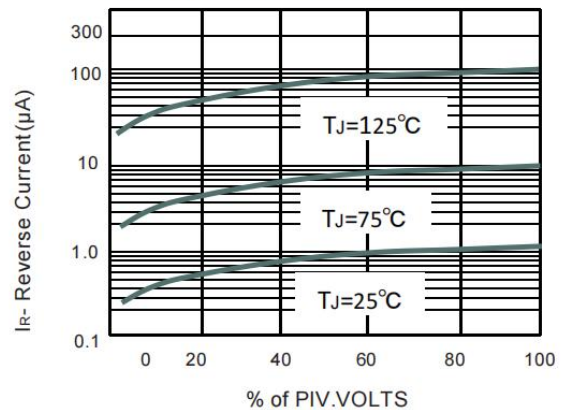


Fig.4 Typical Forward Characteristics

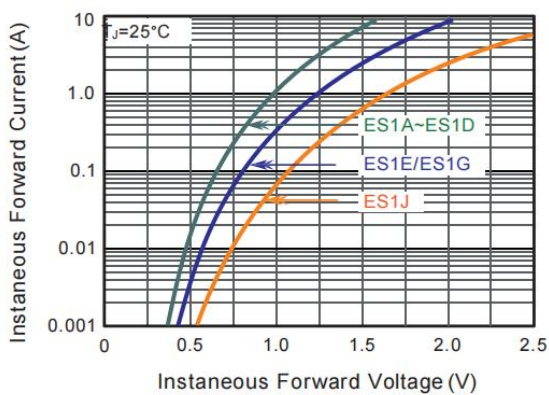


Fig.5 Typical Junction Capacitance

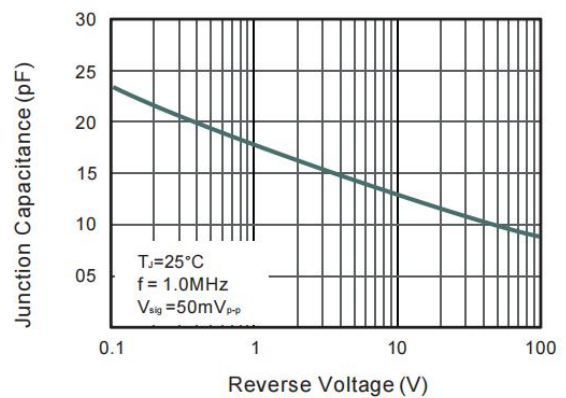
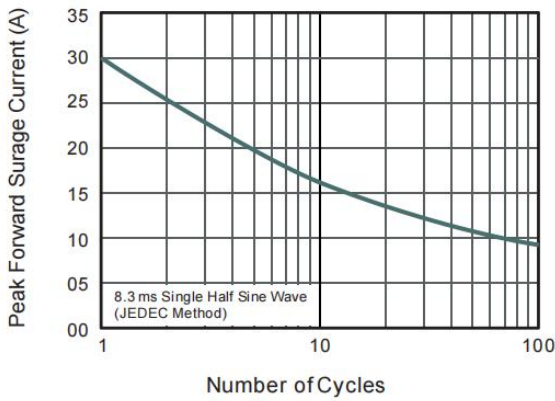


Fig.6 Maximum Non-Repetitive Peak Forward Surge Current



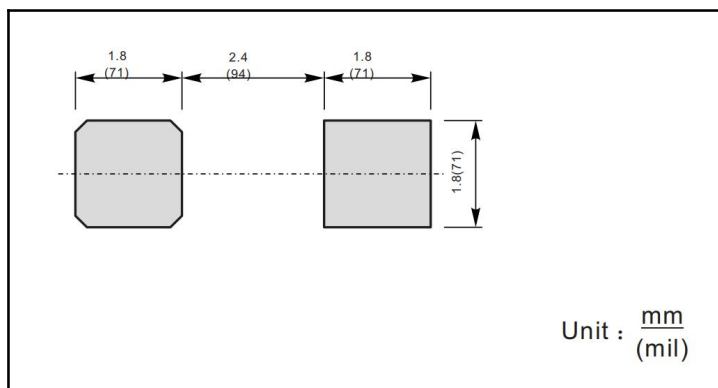
Package outlines

Plastic surface mounted package; 2 leads

DO-214AC/SMA

UNIT		A	D	E	B	c	e	g	a
mm	max	2.2	4.5	2.8	5.3	0.31	1.6	1.5	0.3
	min	1.9	4.0	2.4	4.8	0.15	1.3	0.9	
mil	max	87	181	110	209	12	63	59	12
	min	75	157	94	189	6	51	35	

The recommended mounting pad size



Marking

Type number	Marking code
ES1A	ES1A
ES1B	ES1B
ES1C	ES1C
ES1D	ES1D
ES1E	ES1E
ES1G	ES1G
ES1J	ES1J

*Important Usage Information and Disclaimer

The specifications of Zhuhai Hypersemi Co., Ltd. products are not guarantees of product characteristics. They reflect typical performance expected in standard applications, which may vary with specific uses. Users must conduct prior testing for their applications and make necessary adjustments.

Users are responsible for the safety of applications utilizing our products and must implement adequate safety measures to prevent physical injury, fire, or other risks in case of product failure. It is the user's duty to ensure that application designs comply with all applicable laws and standards. Our products must not be used in any applications where a product failure could reasonably result in personal injury, unless specifically authorized in a signed document by Zhuhai Hypersemi Co., Ltd.

No representations or warranties are made regarding the accuracy or completeness of this information, including any claims of non-infringement of third-party intellectual property rights. Zhuhai Hypersemi Co., Ltd. assumes no liability for any applications or uses of its products and does not grant any licenses to its intellectual property rights or those of others. We also make no claims regarding non-infringement of third-party intellectual property rights that may arise from applications.

Due to technical requirements, our products may contain hazardous substances. For details, please contact your nearest sales office. This document replaces all previous information and may be updated. We reserve the right to make changes.